

## Become a Member

### Levels for Individuals & Families:

- Individual \$40
- Family \$60
- Contributor \$120
- Sponsor \$300
- Benefactor \$600



## Member Benefits

- Discounts on Arboretum programs, such as workshops, classes, and events
- Free access to the auto tour, a scenic drive through the Arboretum
- Free subscription to our Newsletter and frequent e-mail updates
- Availability to rent facilities (Family level and above required for the Annex and Wedding Venues)

**Individual Memberships** receive all benefits listed above.

**Family & Contributors** receive all benefits listed above, plus the ability to rent the Annex, Woodland Chapel, or BEH Memorial Fountain.

**Sponsors** receive all benefits listed above, plus a collector's edition bronze key ring.

**Benefactors** receive all sponsorship benefits and collector's edition silver key ring.

**Not-for-Profit, Corporate Memberships & Sponsorships** are also available.

For more information about memberships or to become a member, visit [hayesarb.org](http://hayesarb.org)

## Corporate Members

B & F Plastics, Inc.  
Dick Hill & Son Heating & AC, Inc.  
Richmond Baking Company  
Warm Glow Candle Company

## Corporate Sponsors

Belden, Inc.  
Burke & Schindler, PLL  
Reid Health  
Western-Cullen-Hayes, Inc.

## Not-For-Profit Members

A Better Way Services, Inc.  
Eastern Indiana Beekeepers  
Health Care Professionals Federal Credit Union  
Indiana University East  
Kiwanis Club of Eastern Indiana  
Meridian Health Services  
Richmond Art Museum  
Richmond Power & Light  
Richmond Rose Garden  
Richmond Symphony Orchestra  
Society for the Preservation and Use of Resources  
Wayne County Purdue Extension  
Wayne County Tourism Bureau

## Grant Supporters

Reid Health Community Benefit  
Wayne County Foundation  
Stamm Koechlein Family Foundation  
Ronald L. McDaniel Foundation

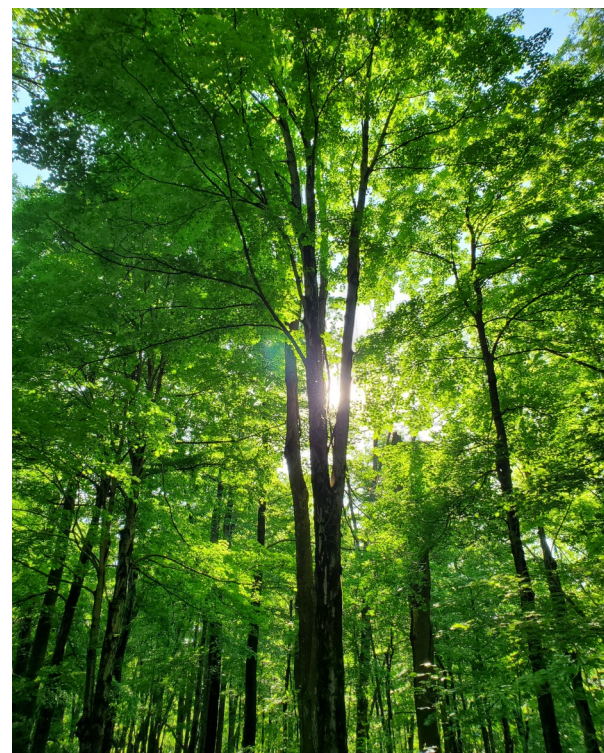
# Hayes Arboretum

RICHMOND, INDIANA

Open all year and free to the public

**Main Entrance**  
801 Elks Rd.  
Open Tues-Sat.  
9am-5pm

**East Side Entrance**  
Woodside Dr. &  
Hayes Arboretum Rd.  
Open Daily Dawn-Dusk



765.962.3745

801 Elks Road Richmond, IN 47374  
[hayesarb.org](http://hayesarb.org)



## Programs

Woodcarving Workshops  
Spring & Fall Mushroom Programs  
Native American History Hike  
Tinkergarten Playdates & Classes  
StoryWalk Trail  
ArbLeaf Leaf Collection  
Educational Hikes & School Programs  
Summer Family Hikes



## Amenities Include

466 acres of natural beauty  
3% of Indiana's old growth forest  
1833 dairy barn redesigned into nature center  
16 miles of recreational trails, which includes  
8 miles of mountain bike trails  
Scenic auto tour through the forest  
Museum of the Arboretum's rich history  
Certified nature playscape  
Pollinator fields, herb & butterfly garden  
To learn more about Hayes Arboretum  
and to see upcoming events,  
visit [hayesarb.org](http://hayesarb.org)

# Points of Interest

## Hayes Museum

Stanley Hayes' family history and his career with the railroad are depicted here. Learn how Stanley W. Hayes and son, Brice, planned to open the beautiful private estate to the public.

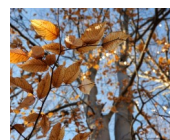


## Nature Center

The renovated 1833 post and beam dairy barn offers a variety of information and educational displays, including a Toddler Play Room and a Bird Watching Room.

## Morton Arch

This large sandstone and brick arch was the entrance to the former Morton High School in downtown Richmond, moved here after the school fire in 1924.



## Beech-Maple Forest

With trees up to 450 years old, this is the remnant of what the early Indiana settlers found in this region's land. 60 acres of old growth are located on the grounds.

## Woodland Chapel

This outdoor sanctuary is not only a popular wedding venue, but also a great place to enjoy the serene atmosphere of nature.



## Brice E. Hayes Memorial Fountain

The fountain is dedicated to former Board President, Brice E. Hayes. His vision helped establish the facilities and programs.

## Nature Playscape

Certified outdoor classroom designed for nature-based play. Stations include mud kitchen, butterfly garden, dig area, and music trail. Picnic spaces and tables are available.



## Paul C. McClure Native Woody Plant Preserve

These acres have many specimens of tree, shrubs, and vines native to the Whitewater Valley Drainage Basin. See the true traits and growth of these woody plants in a large open space.



Arboretum

Access Roads

Ronald L. McDaniel Foundation Auto Tour

Trails

Buildings

# Hiking Trails

## Blue Beech Trail

**Blue Arrows**  
Length: 3/4 mile



On this trail you will see the beauty of the old growth Beech-Maple forest, as well as other stages of a forest's ecological succession, including a research pond which is undergoing ecological succession as well. Some steep hills.



## Yellow Old Growth Trail

**Yellow Arrows**  
Length: 1 mile



Wildflowers line the trail in early spring, including Trillium, Spring Beauties, Hepatica, and more. This trail will take you up and down several hills, over spring-fed Salamander Stream, and through the Oak-Tulip Experiment and lush old growth forests.



## Orange Salamander Stream Trail

**Orange Arrows**  
Length: 1/4 mile



This short trail begins near the Springhouse and ends at Trillium Hill. This trail has a wide variety of spring wildflowers from late March through the middle of May. Stop by the Fern Garden to see plants from the Whitewater Valley area.

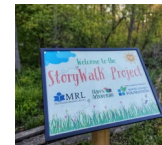


## Red StoryWalk™ Trail

**Red Arrows**  
Length: 1 mile



This trail goes through forest and open-field areas on the southern portion of the property. Check out the monthly story along the way.



## East Mountain Bike Trails

Length: 8 miles

The Mountain Bike Trails start at the East Side Trail Head Parking Lot off of Hayes Arboretum Rd. Check the Hayes Arb Mountain Bike Trails Facebook page to verify trail status. To ride the trail, bikers must sign a one time safety waiver and wear a helmet. The waiver can be found online at [www.hayesarb.org](http://www.hayesarb.org).



<b>1916</b> Stanley W. Hayes purchased first 3 parcels of land for his estate	<b>1920</b> First house on property, ordered from Sears catalog	<b>1932</b> Morton Arch moved to current location	<b>1963</b> Hayes Arboretum opened to the public April 28th	<b>1964</b> First summer classes for children	<b>1970</b> First wedding at the Woodland Chapel	<b>1980</b> Brice E. Hayes Memorial Fountain dedicated May 4th	<b>1992</b> Volunteer program started	<b>2001</b> 4 acres gifted from McKinney Family
<b>1922</b> Oak Tulip experiment planted (10 acres)	<b>1922</b> Native Woody Plant Preserve planted	<b>1959</b> Stanley W. Hayes Research Foundation formed	<b>1963</b> Stanley Hayes passes at age 97, May 17th	<b>1965</b> Excavated Hopewell Native Mound for research	<b>1971</b> 431 year old Sycamore arrived from Brookville, IN	<b>1994</b> Membership program started	<b>2001</b> 116 acres gifted from Drs. George & Carolyn Blakey	<b>2014</b> Wetland research began by Ball State University
<b>1924</b> Construction on Hayes Estate House completed				<b>1966</b> Nature Center opened (re-purposed Dairy Barn)	<b>1974</b> Springhouse built and dedicated	<b>2000</b> Hayes Museum and Butterfly House opened	<b>2012</b> East Side opened for mountain biking	<b>2017</b> Playscape designed especially for children opened
							<b>2015</b> Celebration of 100 years of environmental stewardship	